



Vehicle Maintenance Course Profile



Seat Time

1 - 2 hours, self-paced

Course Audience

Any automotive service professional requiring additional information and training on TPMS service

Course Description

This course will introduce learners to the Tire Pressure Monitoring System (TPMS), types of TPMS, common issues encountered, and procedures for diagnosis, repair and calibration. You will learn about the correct mounting and dismounting of TPMS equipped tires and various guidelines for parts replacement.

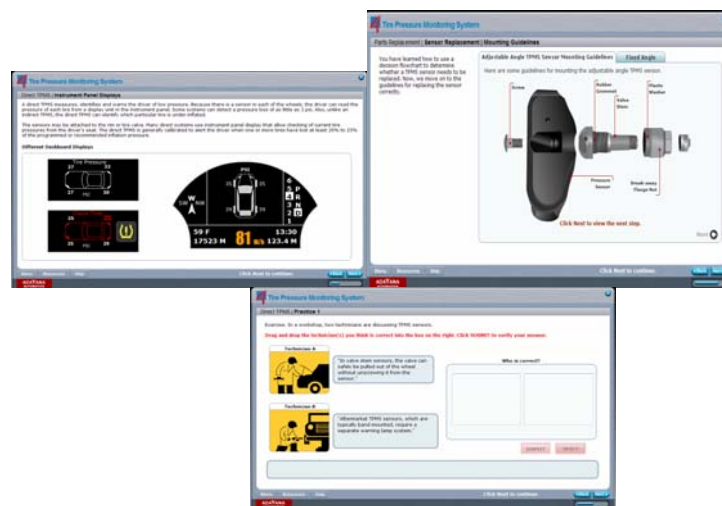
Course Topics

- Introduction to TPMS
- Indirect TPMS
- Direct TPMS
- Basic Service Tools and Procedures
- Tire Dismounting and Mounting
- Parts Replacement

Course Objectives

In this course, users will learn to:

- Recognize the purpose of TPMS on a vehicle and its advantages
- Differentiate between the two types of TPMS
- Describe the theory of operation of direct and indirect TPMS
- Identify the components, need for calibration and common issues associated with direct and indirect TPMS
- Use proper tools and procedures for diagnosis and service of TPMS





Vehicle Maintenance
Course Profile



Course Objectives

(Continued)

- Reset a TPMS using various calibration tools available in the market
- Mount and Dismount a TPMS equipped tire using the recommended procedure
- Identify aftermarket and OEM parts available for servicing or retrofitting TPMS.
- Remove and replace typical TPMS sensors

Training Outcomes

- Provides an effective training message that reinforces consistent and accurate understanding of TPMS and its service
- Improves the quality of TPMS service
- Increases productivity of new and existing technicians performing vehicle maintenance

Course Features

- Global navigation
- Practice pages with multiple choice, drag 'n drop, true/false
- Interactive and animated content pages
- Glossary and resource links
- Slide shows
- Final Assessment

Pricing Options